

NAMASCOR.COM

FEATURE FOCUS

At Namascor, we recognize the critical demands placed on maintenance teams in the industrial sector—and we rise above those challenges. With the shortest order processing time in Europe, we're not just a supplier; we are an indispensable link in your technical supply chain.

Whether it's sourcing top-tier spare parts, repairing mission-critical components, or ensuring flawless calibration, our purpose is singular: to ensure your operations perform at their peak without interruption.

We provide tailored, project-based support to elite industries such as steel and aluminum production, power stations, logistics and data centers, and desalination plants. As a Namascor partner, you gain round-the-clock access to our exclusive dispatch center, ensuring immediate support whenever you need it.

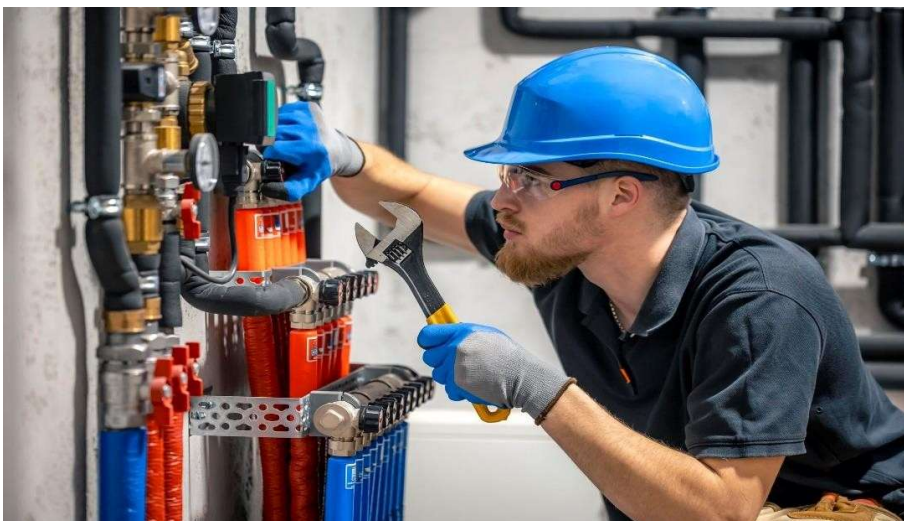
From our strategic hub in the Netherlands, we serve our clients with precision and a deep commitment to sustainability. With 12 highly specialized product lines, we deliver essential product batches precisely timed to your maintenance schedules—because at Namascor, we understand that every second counts.

To explore our premium products and services, visit our website or schedule a one-on-one consultation with our experts. If you already know what you need, our streamlined customer portal is available for instant inquiries.

QUICK INSIGHTS

Namascor empowers industrial leaders by saving time and resources through expert solutions tailored to their unique needs.

- **Our Products:** High-grade spare parts, instrumentation, and mechanical components.
- **Our Services:** Precision repair, calibration, and circular solutions, including refurbished parts and exchange programs.
- **Industries We Serve:** Energy, logistics, petrochemical, steel, aluminum, desalination plants, and more.
- **Ready to Elevate Your Operations?** Experience fast, reliable, and exclusive support—contact Namascor today.



NAMASCOR.COM

SERVICE SOLUTIONS

Looking for ways to lower costs or enhance your operations? Our specialized services include:

- **Repair Services:**

Extend the lifecycle of critical components like valves, bearings, and flow dividers.

- **Calibration:**

Ensure compliance and accuracy with precision testing for your instruments.

- **Sustainability:**

Reduce costs and waste with our circular service options, including refurbished parts and repair programs.

GET IN TOUCH

📍 Jansbuitensingel 6, Arnhem, Netherlands

☎ +31 6 301 96343

✉ sales@namascor.com

🌐 www.namascor.com

*Namascoris
dedicated to help
you succeed.
Reach out to
discuss your
requirements.*



Need support during installation or do you have questions about upgrade options?

Let us know.

Visit our web portal for order info. Our web portal is available 24/7 to registered users, providing insight in your current orders, delivery.

Scope of supply

Category	Product Lines	Brands
Drives and control systems	- AC/DC Motors	- ABB
	- Amplifiers	- Allen Bradley
	- Circuit Boards	- Baldor/Reliance
	- Contactors	- Bosch Rexroth
	- Controls	- Fanuc
	- Drives/Inverters	- General Electric
	- Encoders	- Indramat
	- PLC's	- Lenze
	- Power Supplies	- Mitsubishi
	- Servo Motors	- Omron
	- Teach Pendants	- Schneider
	- Touchscreens/HMI's	- Siemens
Turbine spare parts	- Gas Turbine Parts	- General Electric
	- Steam Turbine Parts	- Siemens
	- Mechanical Components	- Mitsubishi
	- Combustion Components	- Toshiba
	- Bearings	- Rolls-Royce
	- Rotors	- Alstom
	- Valves	- Wärtsilä
	- High-Temperature Components	
HVAC Equipment and spares	- HVAC Sensors	- Honeywell
	- Thermostats	- Siemens
	- Control Panels	- Schneider
		- Johnson Controls
	- Air Quality Sensors	
	- HVAC Controllers	- Danfoss
	- Gas Detectors	- Emerson
	- Pressure Sensors	- Belimo
	- HVAC Valves	
Detection instruments and Equipment	- Industrial Sensors (e.g., Temperature, Pressure, Vibration)	- Siemens
	- Safety Sensors	- Honeywell
	- Gas Detectors	- SICK
	- Smoke/Fire Detectors	- Bosch
	- CO2 Detectors	- Omron
	- Vibration Monitors	- Schneider
	- Alarm Systems	- Testo
		- GfG
		- Riken Keiki